

What is on the Ballot?

State Judicial Seats

- ★ Pa Supreme Court
- ★ Pa Superior Court
- ★ Pa Commonwealth Court

Chester County Judicial Seats

- ★ Court of Common Pleas

Chester County Offices

- ★ Commissioners
- ★ District Attorney
- ★ Prothonotary
- ★ Recorder of Deeds
- ★ Register of Wills
- ★ Sheriff



Municipal/Local Offices

Some of these races may be on your ballot:

- ★ Magisterial District Judge
- ★ School Board Directors
- ★ Township Supervisor or Borough Council
- ★ Auditor
- ★ Tax Collector

Who is on MY ballot?

- ★ **In the Primary, County & State Candidates** are on your Party's website Find your local or municipal candidates on CCVS website under "Unofficial list of Candidates"
- ★ **In the General Election**, get your sample ballot from Voter Services or your local Party.

2023 Voter Basics

Primary Election

Tuesday, May 16, 2023

- In Pennsylvania **ONLY Democrats and Republicans** can vote in the Primary for their nominees to represent their respective Party in the General election.

Cross-Filing ALERT!

On your Primary ballot, Candidates running for these 3 offices MAY be either Republican or Democrat (unidentified party affiliation):

- ★ Magisterial District Judge
- ★ Common Pleas Judge
- ★ School Board Director

How will I know?

- ★ Visit your Party's website OR ask for a sample ballot from your party's table outside your polling place.

General Election

Tuesday, November 7, 2023

- **All Registered Voters** pick the winners for each position on the ballot.



"In an election, every voice is equally powerful – don't underestimate your vote. Voting is the great equalizer."

Maya Angelou

2023 Chester County Voter Action Guide

Prepared & Published by



**Chester County
Marching Forward**



#OurVoiceShouldBeHeard





Vote by Mail OR In Person!

Where do I go to vote in person?

Your polling place is on your voter registration card

OR

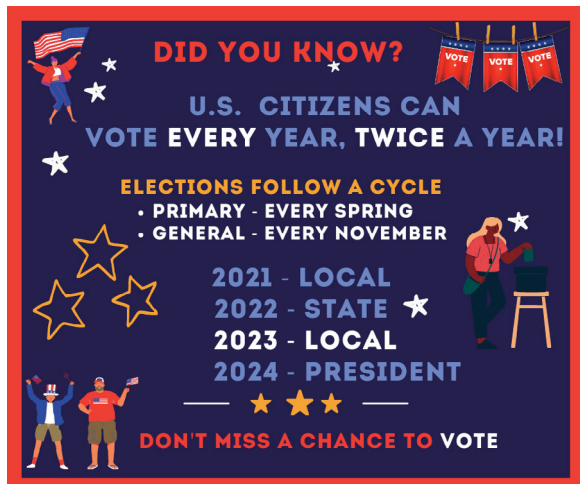
Search "Where's my polling place?" on:

www.vote.pa.gov

Do I need an ID?

NO unless you are a first-time voter, or if you are voting in a new precinct.

Acceptable ID: driver's license, US passport, voter registration card, military, student or employee ID, firearm permit, current utility bill or bank statement, paycheck or government check, any ID issued by PA or federal government.



How do I vote by mail?

Step 1 – APPLY FOR a Mail-in Ballot

Go to www.vote.pa.gov

- Deadline to *apply* for a Primary ballot is **May 9, 2023**
- Deadline to *apply* for a General ballot is **October 31, 2023**
- A ballot will be mailed to your home.

!!!IMPORTANT TIP!!! Chester County Voter Services must **RECEIVE** your **application** for a mail-in ballot by these dates, so if you are applying for one less than 3 weeks before the election date, go in person to Voter Services to request your ballot on the spot.

Step 2 – Complete and return your Mail-in Ballot

- Use black pen to fill in the oval next to your choices.
- Put ballot into the plain secrecy envelope and seal it. Do not write on this secrecy envelope.
- Put secrecy envelope into the mailing envelope, then SIGN and DATE it where indicated.
- MAIL BACK RIGHT AWAY or you must **bring it yourself** to a Ballot DROP BOX (locations are on the Voter Services website).
- **Ballot must be received by 8:00 pm on election day to count.**



HOW do I register?

By cell phone or computer at:

www.vote.pa.gov

Or use the form from Voter Services

What are the voter registration DEADLINES?

By May 1, 2023 for the Primary

By October 23, 2023 for the General

How do I CHECK to see if I'm registered?

Your registration may have been purged if you have not voted in the last 5 years.

You can register again!

Check on: www.vote.pa.gov

Chester County Voter Services

601 Westtown Road
West Chester, PA 19380-0990

610-344-6410

www.ChesCo.org/156/Voter-Services